



**Mosaic X
Camera**

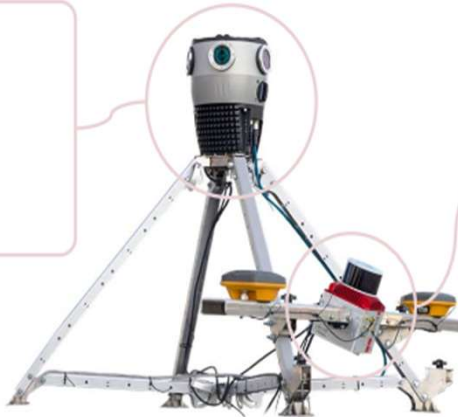
- Very High-resolution 360° imagery
- Suitable for various lighting conditions
- Precisely synchronized sensors
- Sharp images from all angles



**LiDAR, GNSS
and IMU**

- High accuracy and performance
- Versatile and user-friendly operation
- Robust data processing and logging

- 91.2 MP Images
- Global shutter sensors
- 10 FPS, 8 bit h.264
- Removable 1TB SSD
- 21 x 21 x 25 cm, 7 kg
- IP64, 0–45°C, 0–100%



- Accuracy: 2–3 cm
- Precision: 2–4 cm
- Range 120 m
- 512 GB SSD
- INS: IMU and Novatel GNSS
- Position: 1 cm + 1 ppm (RTK); 0.5 cm (PPK)



Learn more
about Meridian

- System dimensions with mount: 83 x 120 x 81 cm, 15 kg
- Fits standard roof racks

Applications:



Surveying & Mapping

Streamline data collection, improve accuracy, and reduce fieldwork time.



Asset Management:

Create detailed visual records of infrastructure, aiding in maintenance and planning.



Construction & Engineering

Monitor progress, conduct site surveys, and produce as-built documentation.